

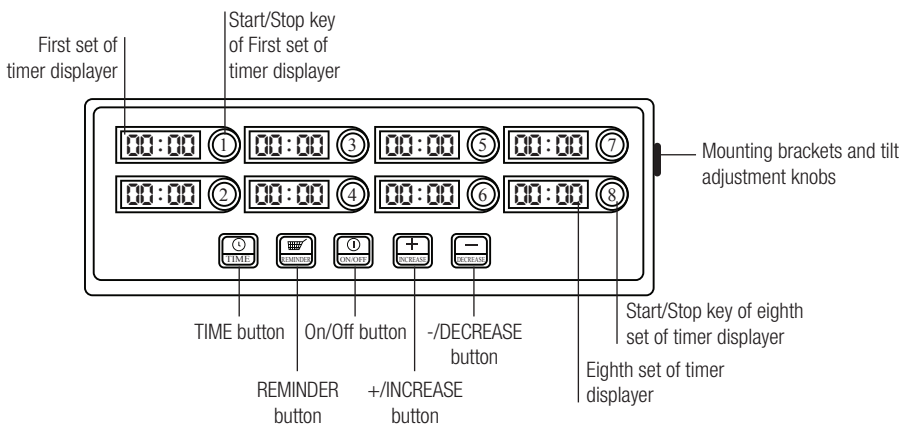
Product Introduction

With 8 sets of independent timers each channel can be individually set to display Minutes:Seconds or Hours:Minutes. Each channel can be set with one total timer and up to three reminders within that set amount.

Features:

- The time can be set from 00:00 - 99:59 minutes, or 00:00 - 99:59 hours.
- Volume is adjustable. It can be set manually with the +/increase or -/decrease buttons.
- Easy to clean ABS and Stainless Steel construction
- Mounting brackets and hardware included
- Power adapter included (no batteries required)

Diagram Of Control Panel



Operation Instruction

1. Press ON/OFF button to turn the unit on
The channels will all display 88:88 for 3 seconds while the unit is testing itself to ensure it is operating correctly.
Press ON/OFF button for 2 seconds to turn the unit off.
2. To Set Timers:
 - a. Press the \odot button, then the corresponding channel number (1-8) you are changing. The second set of "00" after the colon will begin to flash. Use the +/- buttons to adjust the seconds.
 - b. Next, press the corresponding channel number (1-8) and the first set of "00" will begin to flash allowing you to change the minutes. Use the +/- buttons to adjust the minutes.
 - c. Press the \odot button to return to the main display.

*Note: When entering the time setting it will not affect any timer currently in use.
3. Change channel from Minutes:Seconds (MM:SS) to Hours:Minutes (HH:MM)
 - a. While the timer is off, press and hold the \odot button for approximately 2 seconds.
 - b. To change the display press the corresponding channel number (1-8); H-N indicates Hours:Minutes and N-S indicates Minutes:Seconds
4. To Set Reminder Alarm(s):
 - a. Press the REMEMBER button.
 - b. AL-1 appears, press the corresponding channel number (1-8) you are setting the alarm for. Then press +/- to adjust the time.
 - c. Press the REMEMBER button to go to AL-2 and use +/- buttons to adjust the time.
Press the REMEMBER button to go to AL-3 and use +/- buttons to adjust the time.

d. Once set AL-1, AL-2 and AL-3 will flash and the alarm will beep until the corresponding channel number is pressed.

The timer will continue to count down while the reminder alarms are active.

*Note: Leave time display at 00:00 if you do not want to use multiple alarms.

5. START or STOP a timer

Press the corresponding channel number (1-8) for the timer you would like to start. The colon will flash indicating the timer has been started. Press the corresponding channel number (1-8) for 2 seconds to reset the individual timer.

6. At the end of the timer press the corresponding channel number (1-8) to end the alarm. It will then reset to the programmed value.

7. Adjustment of volume:

Use the **+** and **-** buttons to adjust the volume from the main timer screen. The selected volume will automatically be saved.

Note: There is no alarm sound on the lowest volume setting.

Technical Specifications

Unit Size	30 x 10 x 4 cm (12" x 4" x 1.5")
Voltage	AC110V
Power	3W
Unit Weight	1.086 kg
Timer Group	8
Reminder alarms	3

Care and Maintenance:

- The unit is made of ABS and stainless steel and is not waterproof. When cleaning, use a wet cloth with oil degreaser and wipe. Do not submerge in water. **Do not** use in dishwasher.
- **Do not** use hard objects to press buttons. Using items other than a finger may result in scratching the unit and screens.
- Please ensure the mounting brackets are securely attached to the wall before affixing the timer to the brackets.
- Read the instruction manual carefully before using this device.
- **DO NOT** open or disassemble the timer. Doing so may result in electrical shock, and will void the warranty.

Warranty

The 8 Channel Timer has a 1 year warranty to be free of manufacturing defects in materials and workmanship under normal applications of the original owner. If this product becomes inoperable due to defect, return the product with all component pieces and proof of purchase to the address listed below. This warranty does not cover any shipping/transport costs. The warranty does not apply if the product is subject to misuse, neglect, rough handling or damage.

Ship the unit prepaid and insured (at owner's option) to:

Thermor Ltd.

Attn: Returns Department

16975 Leslie Street

Newmarket, ON L3Y9A1

www.biosprofessional.com

