

H10X-80-208

Height: 34.4" Width: 10.2" Depth: 24.5"
(87.4cm) (25.9cm) (62.2cm)

- Dispenses up to 24gal (90.85L) of boiling water per hour for food prep and cleaning
- Precise temperature (212°F / 100°C) ensures consistent, high quality results
- Includes dry-plug prevention for easy installation
- Prepare large amounts of mashed potatoes, gravy, cheese sauce, gelatin, oatmeal, and many more foods



Agency:



Specifications

Product #: 26300.0001

Temp. Setting: 212°F (100.000°C)

Water Access: Plumbed

Finish: Stainless

Faucet: Upper

Additional Features

Electrical & Capacity

Volts*	Amps	Watts	Cord Attached	Plug Type	8oz cups/hr 236ml cups/hr	Input H ₂ O Temp.	Phase	# Wires plus Ground	Hertz
208	38.7	8050	No	-	-	60°F (15.5°C)	1	2	50/60

*When a BUNN is machine rated 120/208-240V, 120/208V or 120/240V, the higher voltage is the supply voltage needed to power the machine. The 120V is there to supply power to some components rated 120V in the machine, but it is not the supply voltage and would not power the machine if the machine is marked with the before mentioned ratings.

Plumbing Requirements

PSI	kPa	Fitting Supplied	Water Flow Required (GPM)
20-90	138-621	1/4" Male Flare Fitting	-

CAD Drawings

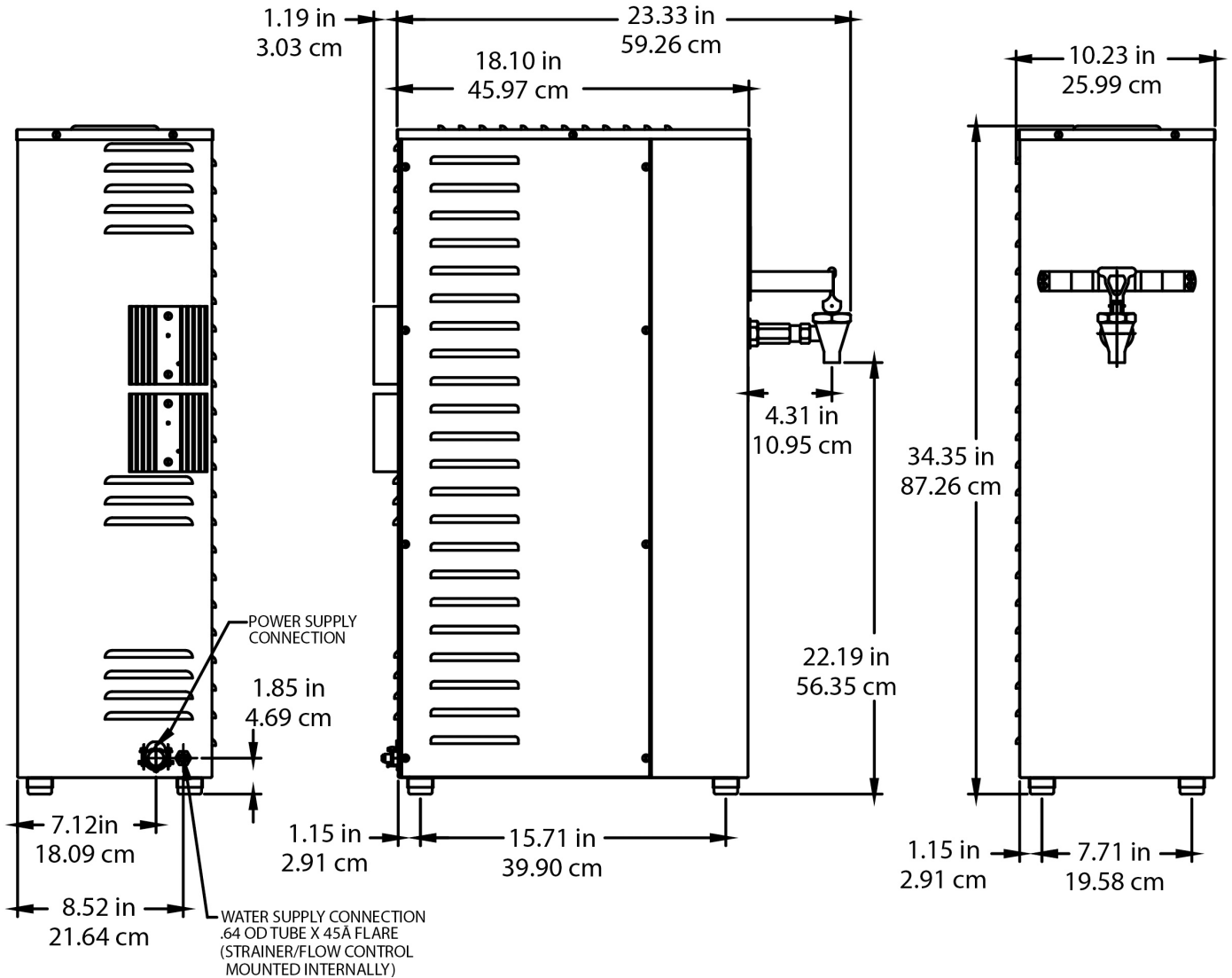
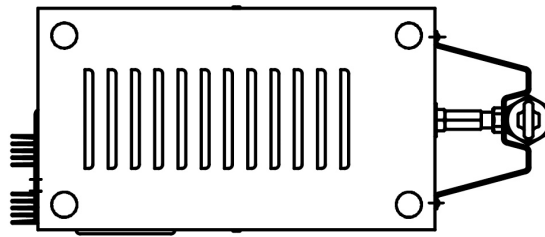
2D	Revit	KLC
●		

WARNING:



BUNN® reserves the right to change specifications and product design without notice. Such revisions do not entitle the buyer to corresponding changes, improvements, additions or replacements for previously purchased equipment. For most current specifications and other info visit bunn.com.

Last Updated:
07/12/2023



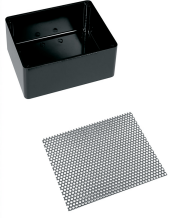
	Unit			Shipping				
	Height	Width	Depth	Height	Width	Depth	Weight	Volume
English	34.4 in.	10.2 in.	24.5 in.	39.0 in.	13.6 in.	27.5 in.	66.850 lbs	8.457 ft ³
Metric	87.4 cm	25.9 cm	62.2 cm	99.1 cm	34.6 cm	69.9 cm	30.323 kgs	0.239 m ³



BUNN® reserves the right to change specifications and product design without notice. Such revisions do not entitle the buyer to corresponding changes, improvements, additions or replacements for previously purchased equipment. For most current specifications and other info visit bunn.com.

Last Updated:
07/12/2023

Related Products & Accessories:H10X-80-208(26300.0001)



DRIP TRAY KIT (2.5"HT-HW2)

Product #: 02497.0000



WATER FILTER, EQHP-10L

Product #: 39000.0001



SYSTEM, WQ-55(2)5L

Product #: 56000.0001



SYSTEM, WEQ-10(1.5)5L

Product #: 56000.0024



CARTRIDGE, WQ-55(2)5L

Product #: 56000.0101



CARTRIDGE, WEQ-10(1.5)5L

Product #: 56000.0121

Serving & Holding Options: H10X-80-208(26300.0001)

Serving and Holding selections are currently unavailable. Please contact your sales representative to find out more information.



BUNN® reserves the right to change specifications and product design without notice. Such revisions do not entitle the buyer to corresponding changes, improvements, additions or replacements for previously purchased equipment. For most current specifications and other info visit bunn.com.

Last Updated:
07/12/2023