

HW2 SST

Height: 23.8" (60.5cm) Width: 7.1" (18.0cm) Depth: 15.1" (38.4cm)

- 2gal (7.57L) of hot water in a space-saving machine just 7.1" (18.03cm) wide to fit any counter
- Includes drip tray
- High quality, easy-to-clean stainless steel exterior and tank for a long, dependable life
- Fresh, hot water is always available since the HW2 is plumbed to your water line



Agency:



Specifications

Product #: 02500.0001

Temp. Setting: 200°F (93.333°C)

Water Access: Plumbed

Finish: Stainless

Faucet: Upper

Additional Features

Capacity at 60° F

Electrical & Capacity

Volts*	Amps	Watts	Cord Attached	Plug Type	8oz cups/hr 236ml cups/hr	Input H ₂ O Temp.	Phase	# Wires plus Ground	Hertz
120	15	1800	Yes	NEMA 5-15P	-	60°F (15.5°C)	1	2	60

*When a BUNN is machine rated 120/208-240V, 120/208V or 120/240V, the higher voltage is the supply voltage needed to power the machine. The 120V is there to supply power to some components rated 120V in the machine, but it is not the supply voltage and would not power the machine if the machine is marked with the before mentioned ratings.

Plumbing Requirements

PSI	kPa	Fitting Supplied	Water Flow Required (GPM)
20-90	138-621	1/4" Male Flare Fitting	-

CAD Drawings

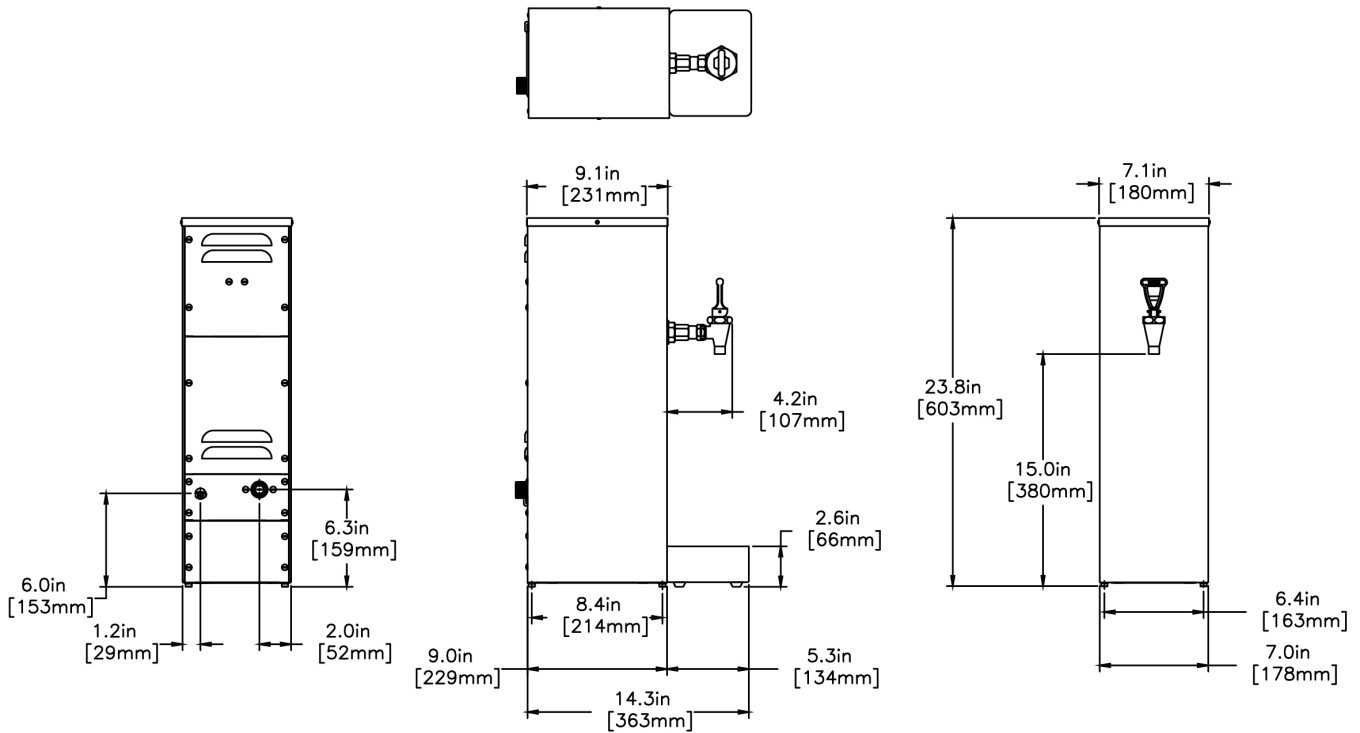
2D	Revit	KLC
●		

WARNING:



BUNN® reserves the right to change specifications and product design without notice. Such revisions do not entitle the buyer to corresponding changes, improvements, additions or replacements for previously purchased equipment. For most current specifications and other info visit bunn.com.

Last Updated:
07/12/2023



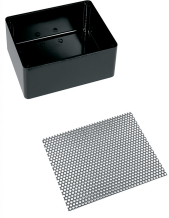
	Unit			Shipping				
	Height	Width	Depth	Height	Width	Depth	Weight	Volume
English	23.8 in.	7.1 in.	15.1 in.	32.3 in.	10.9 in.	16.5 in.	20.150 lbs	3.349 ft ³
Metric	60.5 cm	18.0 cm	38.4 cm	81.9 cm	27.6 cm	41.9 cm	9.140 kgs	0.095 m ³



BUNN® reserves the right to change specifications and product design without notice. Such revisions do not entitle the buyer to corresponding changes, improvements, additions or replacements for previously purchased equipment. For most current specifications and other info visit bunn.com.

Last Updated:
07/12/2023

Related Products & Accessories:HW2 SST(02500.0001)



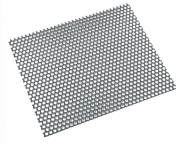
DRIP TRAY KIT (2.5"HT-HW2)

Product #: 02497.0000



DRIP TRAY

Product #: 02545.0000



COVER, DRIP TRAY-PERFORATED

Product #: 02546.0000

FOOT, RUBBER

Product #: 02547.0000



WATER FILTER SYSTEM,EQ-17-TL

Product #: 30200.1000



WATER FILTER,IN LINE ED-17-TL

Product #: 30201.1001



SYSTEM, WEQ-10(1.5)5L

Product #: 56000.0024



CARTRIDGE, WEQ-10 (1.5)5L

Product #: 56000.0121



CARTRIDGE, WEQ-10.3 (1.67)5L

Product #: 56000.0137



BUNN® reserves the right to change specifications and product design without notice. Such revisions do not entitle the buyer to corresponding changes, improvements, additions or replacements for previously purchased equipment. For most current specifications and other info visit bunn.com.

Last Updated:
07/12/2023

Serving & Holding Options: HW2 SST(02500.0001)

Serving and Holding selections are currently unavailable. Please contact your sales representative to find out more information.



BUNN® reserves the right to change specifications and product design without notice. Such revisions do not entitle the buyer to corresponding changes, improvements, additions or replacements for previously purchased equipment. For most current specifications and other info visit bunn.com.

Last Updated:
07/12/2023