



VERSAs
DISPLAY

CGCM-CT SERIES 33

COUNTERTOP CURVED GLASS DISPLAY CASES

CGCM-CT SERIES 33 CURVED GLASS COUNTERTOP DISPLAY CASES



- AVAILABLE IN 3 SIZES

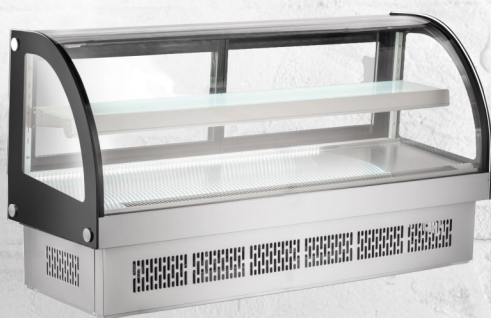
CGCM-CT-3633

CGCM-CT-4833

CGCM-CT-6033



- DROP IN DESIGN
- BRILLIANT INTERNAL LED LIGHTING ON TOP AND UNDER SHELF
- SLIDING DOORS AT BACK
- DIGITAL TEMPERATURE CONTROL AND DISPLAY
- 4 SIDES DOUBLE TEMPERED GLASS
- 1 ADJUSTABLE GLASS SHELF
- VENTILATED COOLING SYSTEM
- AUTOMATIC DEFROST



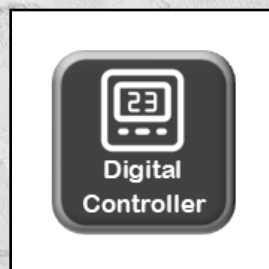
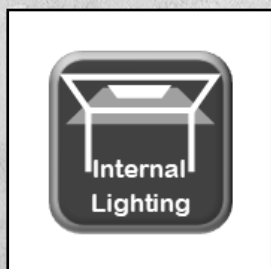
WARRANTY:
TWO YEAR PARTS AND
LABOUR; FIVE YEARS ON
COMPRESSOR

SPECIFICATIONS SUBJECT TO
CHANGE WITHOUT NOTICE.

FIND
ADDITIONAL
BENEFITS
HERE



ADDITIONAL IMAGES



MODEL DESIGNATIONS


ADDITIONAL RESOURCES



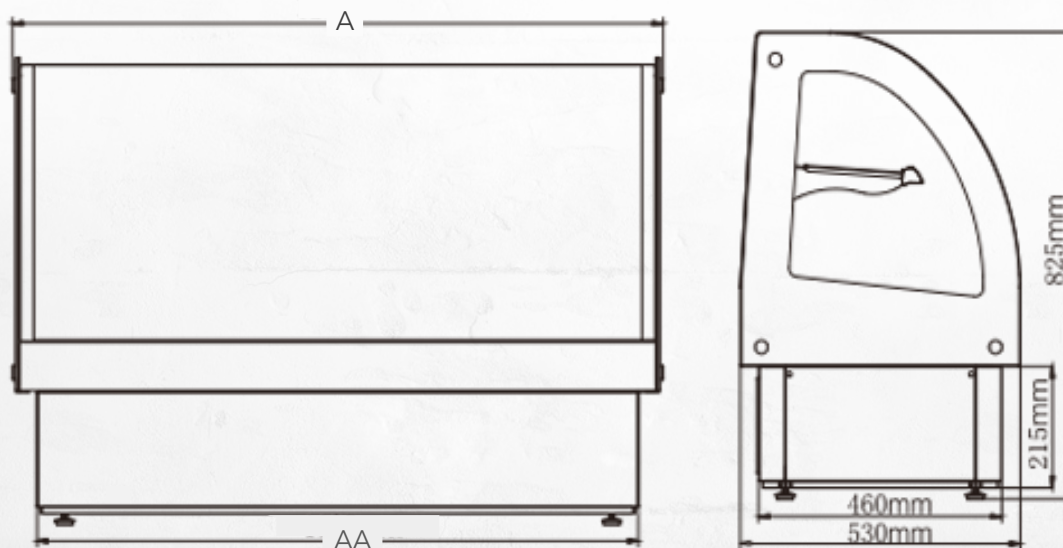
CGCM-CT SERIES 33

COUNTERTOP CURVED GLASS DISPLAY CASES

MODEL		PRODUCT DIMENSIONS						SHIPPING DIMENSIONS				DOORS	SHELVES	HP	AMPS
		WIDTH (A)	WIDTH (AA)	DEPTH (B)	HEIGHT (C)	WEIGHT LB/KG	CAPAC. (L/CUFT)	WIDTH	DEPTH	HEIGHT	WEIGHT LB/KG				
CGCM-CT-3633	INCH	36.4	32.8	20.8	32.4	184.0	135.0	39.1	23.8	38.9	216.0	2.0	1.0	1/5	2.8
	MM	927.0	832.0	530.0	825.0	83.5	4.8	995.0	605.0	990.0	98.0				
CGCM-CT-4833	INCH	48.5	44.8	20.8	32.4	220.4	185.0	51.1	23.8	38.9	257.9	2.0	1.0	1/5	2.9
	MM	1,232.0	1137.0	530.0	825.0	100.0	6.5	1,300.0	605.0	990.0	117.0				
CGCM-CT-6033	INCH	60.5	55.6	22.3	27.0	253.5	235.0	63.1	24.8	28.3	297.6	2.0	1.0	1/5	3.0
	MM	1,537.0	1412.0	530.0	825.0	115.0	8.3	1,605.0	605.0	990.0	135.0				

VOLTAGE	NEMA PLUG	CORD LENGTH	REFRIGERANT	TEMPERATURE RANGE	 NEMA 5-15P
110-120~	5-15P	≥1.8m	R290	0-12C	
				32-53F	

LINE DRAWINGS



EFI Sales Ltd.
 Toronto Office & DC
 515 Hanlon Creek Blvd.
 Guelph, ON, N1C 0A1

EFI Sales Ltd.
 Vancouver Office & DC
 26895 Gloucester Way
 Langley, BC, V4W 3Y3

(888) 565-9920 Toll Free
 (519) 822-1895 Toronto
 (604) 607-8850 Vancouver

