



X-Series 24" Gas Restaurant Range

Project _____
 Item _____
 Quantity _____
 CSI Section 11400
 Approved _____
 Date _____

Models

- X24-4L



Model X24-4L

Standard Features

- Large 27" (686mm) deep work top surface
- Stainless steel front and sides
- Stainless steel 4" (102mm) plate rail
- Stainless steel backguard w/ removable stainless steel shelf
- 12" (305mm) section stamped drip trays w/ dimpled bottom
- Durable easy to read control knobs
- Easy to clean 6" (152mm) steel core, injection molded legs
- Pressure regulator, 3/4" NPT
- Ergonomic split cast-iron top ring grates
- 30,000 BTU/8.79 kW 2-piece cast-iron "Q" style donut open burner
- Straight steel tube oven burner 25,000 BTU/7.33 kW
- Easy to access oven pilot
- Reinforced chassis
- Space-saver oven with ribbed porcelain oven bottom and door interior, aluminized top, sides and back
- Oven thermostat w/ Low to 500° F (260° C)
- Nickel-plated oven rack with two fixed-position oven rack guides
- Square door design with strong, "keep-cool" oven door handle

Options & Accessories

- Low-profile 9-3/8" (238mm) backguard stainless steel front and sides
- Four 6" (152mm) levelling swivel casters w/front locking
- Celsius temperature dials

Specifications

Gas restaurant series range with space-saver oven.

23-5/8" (600mm) wide with a 27" (686mm) deep work top surface.

Stainless steel front, sides and 4" (102mm) wide front rail.

6" (152mm) legs with adjustable feet.

Four robust 2-piece 30,000 BTU/8.797 kW (Natural gas), cast open burners set in split cast-iron ergonomic grates.

Porcelain oven bottom and door liner.

Two fixed-position rack guides w/ one oven rack.

Heavy-duty oven door with "keep-cool" door handle.

Straight steel tube oven burner 25,000 BTU/7.33 kW

(natural gas) provides quality bake and good recovery.

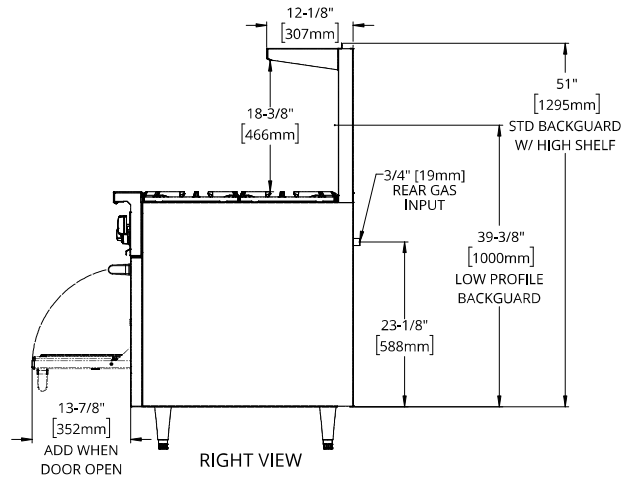
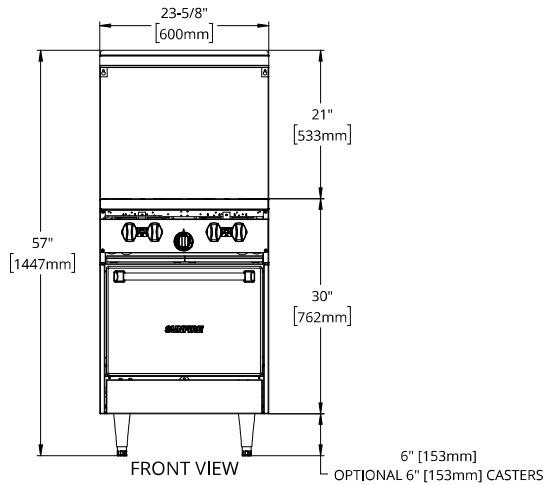
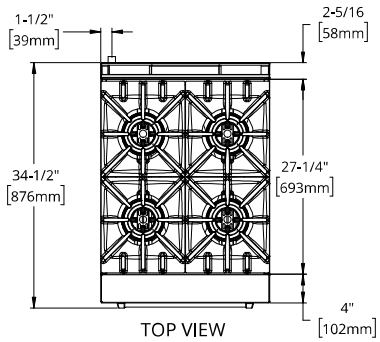
Oven thermostat ranges from Low to 500° F (260° C).

NOTE: Use only Garland certified casters and approved restraining devices.



X-Series 24" Gas Restaurant Range

X-Series 24" Gas Restaurant Range



Gas input ratings shown for installations up to 2000 ft., (610m) above sea level. Please specify altitudes over 2000 ft.

This product is not approved for residential use.

Note: Installation clearance reductions are applicable only where local codes permit.

Model Number	Description	Total BTU/Hr Natural Gas	Total BTU/Hr Propane	Shipping Information		
				Lbs.	Kg	Cu Ft
X24-4L	Four Open Burners w/Space-Saver Oven	145,000	129,000	302	137	26

Width	Depth	Height w/ Shelf	Oven Interior			Combustible Wall Clearance		Entry Clearances	
			Height	Depth	Width	Sides	Rear	Crated	Uncrated
23-5/8" (600mm)	33-1/2" (851mm)	57" (1448mm)	13" (330mm)	26" (660mm)	20" (508mm)	14" (357mm)	6" (152mm)	25" (635mm)	24-1/2" (622mm)

Burner Ratings (BTU/Hr/kW)		
Gas	Open	Space-Saver Oven
Natural	30,000/8.79	25,000/7.33
Propane	26,000/7.61	25,000/7.33

Manifold Operating Pressure	
Natural	Propane
4.5" WC 11 mbar	10" WC 25 mbar

Garland/SunFire reserves the right to make changes to the design or specifications without prior notice.